



FRANK AMERICA INC.

UNIQUE SHOWCASE SYSTEMS



EXCEL

TRADITIONAL SHOWCASES

TRADITIONAL SHOWCASES

THE RANGE OF TRADITIONAL SHOWCASES
FROM FRANK AMERICA

Do you need a traditional showcase fast? For us, at FRANK AMERICA, this is not a problem. In addition to our tailor-made FRANK system, we offer our EXCEL display cabinets in the most popular design. These are perfect for a straightforward presentation of your collections, shop items, or other commercial uses. The EXCEL line is equipped with all basics required for a professional exhibition.



LINE F

FREESTANDING CASES



LINE C

COLUMN CASES

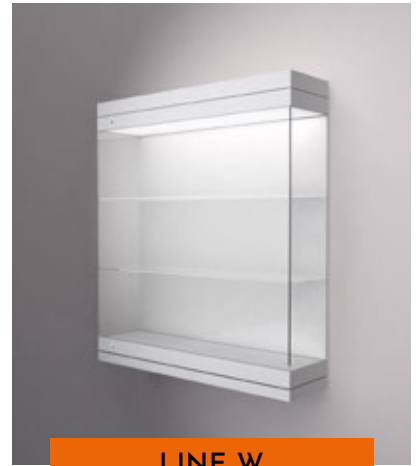
EXCEL



LINE A
ARCHIVE CASES



LINE T
TABLE CASES



LINE W
WALL CASES

LINE F

FREESTANDING CASES

EXCEL

The EXCEL Line F - freestanding display case series is constructed of 8 mm thick glass panels, and is the most requested case in standard series. Maximum visibility is ensured by mitered and polished edges. A user-friendly design makes opening and closing the rotating glass door exceptionally easy. These cases are equipped with a precision-formed silicone gasket.

SECURITY IS KEY

Two simultaneously locking security cylinder locks protect the display case from burglary.

STANDING STRAIGHT

The case has a rigid supporting frame with leveling capability guaranteeing stability. The glazing frame base connection provides an elegant visual effect.

YOU HAVE THE CHOICE

The surface is painted in RAL 9002, off-white matt. On request, custom colors are available according to the RAL scale. The EXCEL Line F has a shelving option: three glass shelves made of 8 mm thick float glass, freely adjustable and supported by stainless-steel rods.

DIMENSIONS

standard: 24"x24"x75" / 610 x 610 x 1905 mm
46"x24"x75" / 1220 x 610 x 1905 mm

possible dimensions:

height: 71" - 86" / 1803 - 2184 mm
width: 16" - 55" / 406 - 1396 mm
depth: 16" - 55" / 406 - 1396 mm
glass cover height: 4" - 39" / 101 - 991 mm

GLAZING

possible glazing:

- laminated safety glass
- tempered safety glass
- low iron / extra clear glass
- antireflective glass
- annealed glass

FEATURES

standard: ■ adjustable glass shelves
optional: ■ wooden base painted in RAL

LIGHTING

standard: ■ lightbox with fluorescent lamps
optional: ■ light box with low voltage halogen spotlights
■ fiber optics lighting
■ light box with LED-lights
■ low voltage system Apollo with halogen spots
■ LED-lights or LED-Spotlights, focusable

OPENING

standard: ■ hinged door
optional: ■ pull and slide door / slide door

SPECIALS

optional:

- climate control
- alarm technology
- wood veneer base
- base with storage space
- base with drawers
- integrated presentation turntable



LINE T

TABLE CASES

EXCEL

THE EXCEL LINE T - TABLE DISPLAY CASE SERIES COMES WITH A VARIETY OF DIFFERENT BASE OPTIONS. LEGS, FULL SIDE PANELS, A FULL OR A COLUMNAR BASE OR AN ADDITIONAL DRAWER ARE POSSIBILITIES.

SAFETY FIRST

Your artifacts are protected by surface flush security locks.

RELY ON IT

The EXCEL Line T is made with a rigid base and an integrated glass top 60 mm (2,5") high, light metal frame.

The visible surfaces are painted in the standard color RAL

9002, off-white matt. The 3/4" thick display case inlay can be painted or covered in fabric. The standard dimensions are W x D x H = 48"x24"x36"

MAKE YOUR CHOICE

Variable case dimensions are available, as are custom-made finishes, based on the RAL scale.

EASY ACCESS

The glass top is made of 8 mm thick glass panels and can be conveniently opened and closed, utilizing a concealed gas spring system.

DIMENSIONS

standard: 46"x24"x36"/1220x610x914 mm

possible dimensions:

height: 20"-47"/508-1194 mm

width: 16"-71"/406-1803 mm

depth: 16"-71"/406-1803 mm

glass cover height: 6"-23"/152-584 mm

base height: 16"-39"/406-991 mm

GLAZING

- possible glazing:
- laminated safety glass
 - tempered safety glass
 - low iron/extra clear glass
 - antireflective glass
 - annealed glass

FEATURES

standard: ■ base plate covered in fabric

optional: ■ base plate painted in RAL

- illuminated frosted glass base plate
- hidden safety lock

LIGHTING

optional: ■ fiber optics lighting

- flexible light tubes
- light box with LED-lights

OPENING

standard: ■ piston hinged glass hood

optional: ■ electric lift system

SPECIALS

- optional:
- climate control
 - alarm technology
 - genuine wood veneer base
 - base with storage space



MODEL C

TABLE CASE WITH FULL BASE



MODEL O

TABLE CASE WITH 2 FULL SIDES



MODEL L

TABLE CASE WITH 4 LEGS



MODEL P

TABLE CASE WITH RETRACTED BASE PLINTH

LINE F



LINE T



LINE W



LINE A



LINE C



LINE F



LINE A

ARCHIVE CASES

EXCEL

The EXCEL line A - archival display case series offers the ideal combination of presentation and adequate storage. Drawers and doors can be designed to suit your needs. The glass top is the key feature of this classic display case, making it a popular choice for archives and changing displays.

SECURITY INCLUDED

A security lock is mounted flush to protect your treasures.

STURDY AND RELIABLE

The EXCEL Line A is made with a rigid base and integrate glass top on a 60 mm (2,5") high, light metal frame.

The visible surfaces are painted in the standard color RAL 9002, off-white matt. The 3/4" thick display case inlay can be either painted or covered in fabric. The standard dimensions are W x D x H = 48"x24"x36"

CUSTOMIZE YOUR CHOICES

Varying case dimensions and custom finishes are available.

EASY TO OPERATE

The glass top is made of 8 mm thick glass panels and can be conveniently opened and closed thanks to a concealed gas spring system.

DIMENSIONS

standard: 46"x24"x36"/1220x610x914 mm

possible dimensions:

height: 20"-47" / 508 - 1194 mm

width: 16"-71" / 406 - 1803 mm

depth: 16"-71" / 406 - 1803 mm

glass cover height: 6"-23" / 152 - 584 mm

base height: 16"-39" / 406 - 991 mm

GLAZING

- possible glazing:
- laminated safety glass
 - tempered safety glass
 - low iron / extra clear glass
 - antireflective glass
 - annealed glass

FEATURES

standard: ■ base plate covered in fabric

optional: ■ base plate painted in RAL

■ illuminated frosted glass base plate

■ hidden safety lock

LIGHTING

optional: ■ fiber optics lighting

■ flexible light tubes

■ light box with LED-lights

OPENING

standard: ■ piston hinged glass hood

optional: ■ electric lift system

SPECIALS

optional: ■ climate control

■ alarm technology

■ genuine wood veneer base

■ base with storage space



LINE C

COLUMN CASES

EXCEL

The Excel Line C - column display case series provides excellent all-round visibility for your collection items. The glass top is made of 8 mm thick glass panels, with mitered and polished edges.

PERFECT SAFETY LOCK

Two flush-mounted security locks keep your items secured.

STRONG SUPPORT

The 60 mm (2.5") high, light metal frame under the glass top provides for stability. The display case base inlay

is 3/4" thick and can be covered in fabric or painted. The standard color of the column surface is RAL 9002, off-white matt. We can customize your showcase color according to the RAL scale.

EASY LIFT

The case opens by simply lifting the entire glass top off the base. An electric lift system is also available as an option.

DIMENSIONS

standard: 16"x16"x63" / 406x406x1600 mm

possible dimensions:

height: 36"-78" / 914-1981 mm

width: 16"-39" / 406-991 mm

depth: 16"-39" / 406-991 mm

glass cover height: 16"-47" / 406-1194 mm

base height: 16"-47" / 406-1194 mm

GLAZING

- possible glazing:
- laminated safety glass
 - tempered safety glass
 - low iron/extra clear glass
 - antireflective glass
 - annealed glass

FEATURES

standard: ■ base plate covered in fabric

optional: ■ base plate painted in RAL

■ illuminated frosted glass base plate

LIGHTING

optional: ■ fiber optics lighting

■ flexible light tubes

■ light box with LED-lights

■ light box with fluorescent lamps

■ low voltage system Apollo with:

■ low voltage halogen spotlights

■ LED-lights

■ LED-Spotlight, focusable- LED-lights

OPENING

standard: ■ glass hood is removable

optional: ■ electric lift system

SPECIALS

optional: ■ climate control

■ alarm technology

■ genuine wood veneer base

■ base with storage space

■ drawers or presentation turntable



LINE W

WALL CASES

EXCEL

The EXCEL Line W - wall case series features a special dust proof construction. Dust-sensitive exhibit items, typically documents, paper items and paintings, are perfectly stored. The design also allows for excellent climate control. With shelving options, this case type can serve to display a wide range of collection items. The variety of usage is unlimited.

SECURE EXISTENCE

Precise flush-mounted security cylinder locks protect the contents within this sophisticated design.

RELY ON IT

The case consists of a back element, and a glass hood made of 8 mm thick glass panels. This minimalist glass hood optimizes visibility while the back panel can be covered with fabric or painted. The visible surfaces are painted in the standard color RAL 9002, off-white matt.

OPENING WITH EASE

The entire glass front can be lifted off. On request, hinged and gas spring solutions are available.

DIMENSIONS

standard: 33" x 8" x 47" / 813 x 203 x 1194 mm

possible dimensions:

height: 16" - 70" / 406 - 1803 mm

width: 16" - 78" / 406 - 1981 mm

depth: 6" - 16" / 152 - 406 mm

GLAZING

- possible glazing:
- laminated safety glass
 - tempered safety glass
 - low iron / extra clear glass
 - antireflective glass
 - annealed glass

FEATURES

standard: ■ wooden base material painted in RAL

optional: ■ back plane with textile character

- illuminated frosted glass bottom

LIGHTING

standard: ■ lightcase with fluorescent lamps

optional: ■ lightcase with LED-lights

- fibre optic light

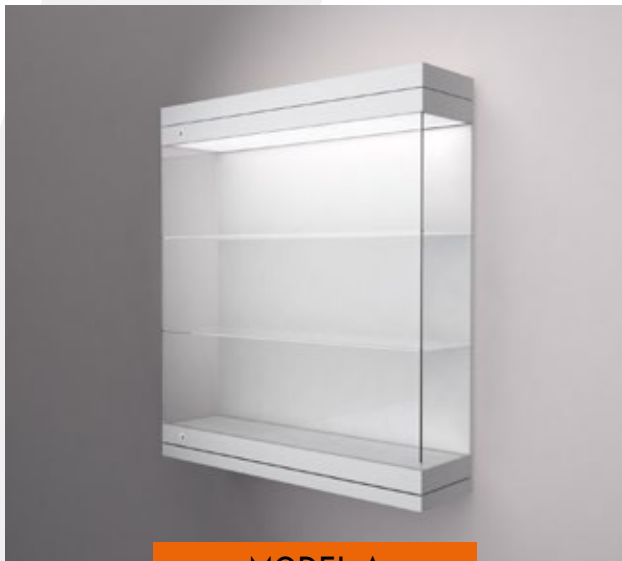
OPENING

standard: glass front removable

optional: gas-pressure springs

SPECIALS

- optional:
- climate control
 - alarm technology
 - wood veneer base



MODEL A

WALL CASE



MODEL B

WALL „HOOD“ CASE



MODEL C

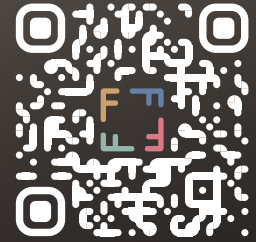
VERTICALLY HINGED OPENING SYSTEM



MODEL D

HORIZONTALLY HINGED OPENING SYSTEM

 FRANK AMERICA INC.
UNIQUE SHOWCASE SYSTEMS



One Liberty Plaza • 165 Broadway - 23rd Floor • New York, NY 10006
Phone +1 (646) 759 3640 • info@frank-america.com



www.frank-america.com